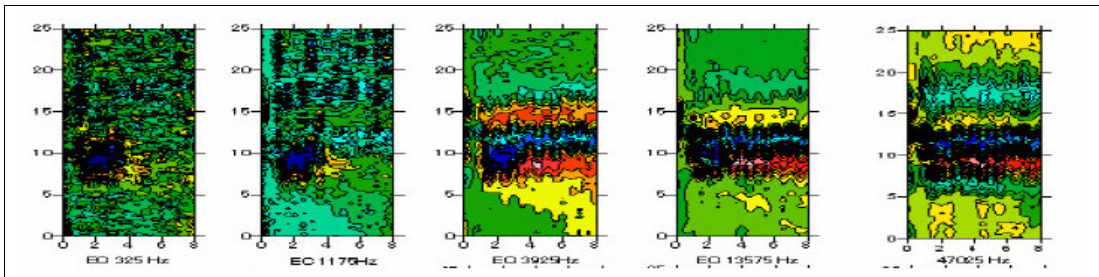


Electromagnetic Survey

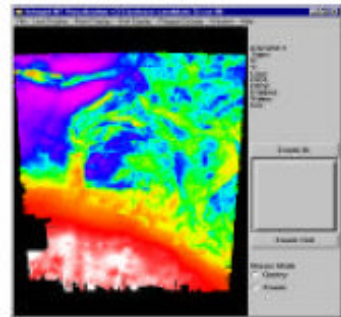
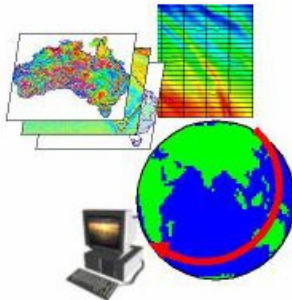
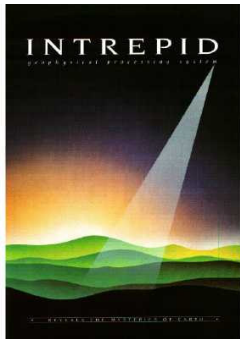
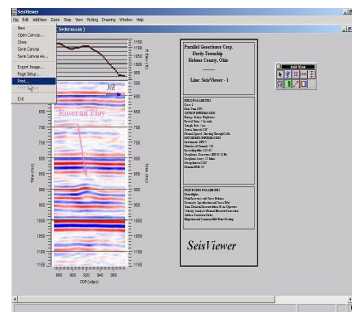
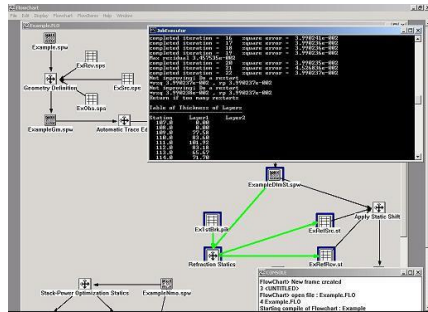
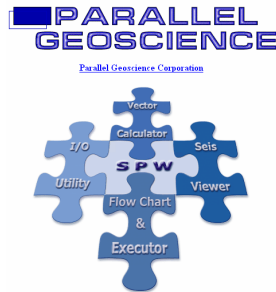
Geophex GEM-2 is a multi-channel electromagnetic sensor. It is portable and quick to cover a large area.

Right: Electromagnetic survey using Geophex GEM-2.

Below: Electric conductivity maps from a GEM-2 survey in Brisbane Botanic Garden showing a buried pipe.



Data Processing and Software



52 Nestor Avenue
Bardon
Queensland 4065
Australia

Phone: 07 3876 3848
Mob: 0411 582 420
Web: www.terra-au.com
e-mail: office@terra-au.com

We See the Invisible